

# COLLIER STREET NEWS

AUGUST/SEPTEMBER 2024



## IN THIS ISSUE

Words from Reverend Ollie and Father Paul

Words from Margaret Tate, Lay Minister

Blast from the Past

Jacqui Bakes

Peking to Paris Rally

Kent's Health and Well Being Services

FOCSS Annual Update

Woodpeckers

Parish Council Minutes

# COLLIER STREET

## PAPER DELIVERY

There is a paper delivery service to the village at around 6am every morning. It is supplied by Jackie's News Limited based in Tenterden, they can be contacted on 01580 763183. Cost of delivery is £3.51 a week.

## Waste and Recycling Service

From Monday 25th March, Maidstone Council has made changes to some waste and recycling collections and your bin day may have altered.

Collection weeks may have altered too.

For more information, please visit 'bins and recycling' on the MBC website.

[www.maidstone.gov.uk](http://www.maidstone.gov.uk)

## CUTE PET OF THE MONTH - MONTY



## Defibrillators

There are defibrillators available at St Margaret's Church, Collier Street and The Woolpack, Benover Road. These are life saving devices so it is important that as many people as possible are able to use them.

Defibrillator training is available for anyone to undertake via the website below:

<https://vimeo.com/557677120/e7524918c5>



## Village What's App Information Group



To keep up to date with beneficial information, news, advice, crime / incidents, you are welcome to join the Resident's What's App group.

If you would like to be part of this group, please send an SMS / iMessage to:

CLlr Deborah Papas on 07960 754641 stating "**Sign up for CSWA Group**" and Deborah will add you to the group.

### Terms and Conditions

By signing up to the group, you accept these conditions and also understand that the messages are only for urgent and important details only and not for general chit-chat. You also are in agreement to receiving information considered to be of benefit to the group such as community safety and highways bulletins. The Parish Council will not tolerate any rude or inappropriate messages, photographs or videos and reserve the right to remove such material and also the participant from the group.

**COPY DEADLINE 20TH OF THE MONTH**

Phil and Pam Watts from Green Lane have kindly shared their experience after completing the Peking to Paris Rally, read the full story on pages 12 and 13.



The route

Thank you for taking the time to share this with us.

Follow Patrick and Pam on Instagram:

[https://www.instagram.com/pam\\_patrick\\_peking2paris?igsh=OWtmYXh0ZGFwOWNr&utm\\_source=qr](https://www.instagram.com/pam_patrick_peking2paris?igsh=OWtmYXh0ZGFwOWNr&utm_source=qr)

#### WE NEED YOUR HELP

We would love to hear from you with information, articles or photographs you wish to feature in the village magazine.

Or please send us a picture of your pet for 'cute pet of the month'.

Without your contributions there would not be a magazine, so please send to

[editorparishmag@mail.com](mailto:editorparishmag@mail.com)

**THANK YOU**

#### FLY TIPPING AND POTHOLES

Did you know that anyone can report pot holes or fly tipping in the village.

Please go to the Maidstone Borough Council website and click on the "Report It" tab.



**Collier Street** is a small village and civil parish in the Borough of Maidstone in Kent, England. The village is in a rural location but is close to the larger villages of Yalding, Marden and Horsmonden.

The village includes St Margaret's Church, a primary school, a small business estate and several farms. St. Margaret's church and school are at the centre of the village. The church forms part of a benefice with St. Mary's in Laddingford and St. Peter & St. Paul in Yalding. The three villages are located within three miles of each other but Collier Street, once part of Yalding's civil parish, has had its own parish since 1999. The civic or civil parish of Collier Street is governed by an elected parish council and was formed following a review by Maidstone Borough Council. The village seems not to have existed before the start of the nineteenth century, nor does the road even appear on maps before the late C18th. It is most likely that the village was named for a long narrow clearing ('strait' hence 'street') through a wood used by charcoal burners (hence 'Collier'). Subsequently farms were established along with a handful of country houses before the majority of housing followed in the early Victorian era. The church was built between 1847 and 1849 and the attached school was opened in 1860.

#### LOCAL BABYSITTERS

- Lucy Anderson 730244 - Weekdays and weekends
- Rosie Ridd 730816 - During term time Friday and Saturday evenings only
- Jonny Bentley - 730252
- Georgie Barham - 730247
- Olivia Brown—07460 243707—weekends



As we write this letter a General Election is on the horizon, and all of us who are entitled to vote have a choice before us. We might weigh the possibilities and make a decision as to who we think will work hardest to represent our interests and whose political allegiance best represents our own opinions about how to live as a society. But we can also look a little further.

We may be influenced by the policies proposed in party manifestos, but we vote for individuals who will represent us in parliament and work to help resolve our local difficulties whatever their party allegiance. They will serve their constituents locally as well as nationally, and be public figures who often forego their anonymity and privacy in the performance of their duties. Much will be expected of them.

Good government seeks to find a balance between self-interest and society. Nobody likes to pay tax, but we recognise the fairness that we should all contribute to shared services and facilities. We seek to be financially secure and economically stable, but not at a cost of poverty and hopelessness for those who find themselves on the margins.

When God directed the prophet Samuel to choose Saul to be the first King of ancient Israel, the choice was based on modesty and obedience and not on background or birth right (1 Samuel 9:21). King David was chosen for courage and faith (1 Samuel 17) and certainly not because he was the eldest or the strongest (1 Samuel 16). And King Solomon chose wisdom over wealth (1 Kings 3). We can choose like this, too.

When Jesus called his closest followers (e.g. Matthew 4:18-22) he paid no attention to what others might have thought. Instead he ignored those who were wealthy, influential, educated, or experienced, and picked people who were weak, fallible, simple, and sometimes unsure of themselves. People like us. People with whom we can identify.

So pray for the candidates, for to offer your life in service to others is no small thing, and continue to pray for those who are elected in due course, for to take on the task of making decisions that affect the lives of others is a heavy responsibility to bear. Choose carefully.

We wish you a happy summer.

Rev'd Ollie & Fr Paul

## What is your favourite bread?

There is a story in the Old Testament of the Bible about bread.

There was a tribe of people known as the Israelites, the descendants of Jacob and his sons, who had gone to live in Egypt in order to escape famine, and who had settled there to raise their families. Times went well for them to begin with while the story of their presence was known, but in time there came a Pharaoh who knew nothing of Joseph and his brothers and that story in the book of Genesis that started with resentment over a coloured coat.

This Pharaoh treated the Israelites harshly in fear that they were likely to rebel against him. He made them slaves and killed their young men to weaken their potential for uprising. We read at the beginning of the book of Exodus that God called Moses to lead his people out of slavery, and that God also sent plagues on the Egyptians until, finally, the Israelites were able to escape into the desert.

But when they had escaped to freedom through the parted waters of the Red Sea, they began to grumble, saying "If only we had died in Egypt!" (Exodus 16:3). "Didn't we have better food when we lived there, even as slaves? But now we are going to starve to death!"

God heard their complaint and provided them with a substance known as "Manna" which was white like coriander seed and tasted like wafers made with honey (Exodus 17:31). It came every day, and they were to collect only what they needed for that day and to trust that God would provide rather than store it up as security for the future. If they tried, it would rot. Trusting in God was a daily act of faith and not a one-off.

Jesus reminded his listeners that it was God who had provided this heavenly bread for their ancestors and not Moses (John 6:32). God knew what they needed and give it to them because he loved them, and God also knows what we need. Yet, so many are unsatisfied with what God has given to us – eager for a better job, more money, an exotic holiday, a new car, more fashionable clothes, a bigger house. The list is endless. But nothing satisfies like the living bread, for the bread which comes from heaven gives life to the world (John 6:33).

So many of us are so busy that we plan our lives into minute sections as we balance our priorities of work, pleasure, and family; and God gets pushed out. It is as if we ignore the influence of the Holy Spirit and just go ahead with our plans anyway, hoping that God will come along with our ideas. But we need to be reminded that effective prayer means giving our full attention to him, always giving thanks for what we have, and not always wishing for more.

So, when you are enjoying your favourite bread, think about the bread of life that is on offer from God, learn to trust in him and his love for you, and eat the food that he provides!

Margaret Tate, Licensed Lay Minister, emerita

# *Collier Street Pop-In Get Together 2024*

## *St Margaret's Church*

*Margaret, Barbara, Jacki, Christine, Jo and Lorna invite you to come along and enjoy: home-made cakes and savouries, friendly company and a raffle.*

*2 - 4pm the second Wednesday of the month:*

*The remaining dates for this year are:*

*August 14th*

*October 9th*

*November 13th*

*December 11th*

*July's Pop-in was held in the garden of David and Frances Goff. Marquees had been erected in case of wet or windy weather but thankfully the sun shone and a lovely couple of hours was enjoyed by all, in fact everyone was reluctant to leave. Thank you David and Frances it made a lovely change and your garden is delightful.*

*Why not join us on Wednesday 14th August, all proceeds are donated to local charities.*





## Blast from the Past!

A 1904 steam roller came through the village on 29th June. Many villagers lined the route to cheer them on.

The drivers Brian and Godfrey left Canterbury at 4.00 am, travelling 40 miles to finish at Yalding



## Jacqui Bakes Indian Kulfi Milk Cake

A pistachio and Cardamon sponge soaked in saffron milk with a whipped cream topping. I first tried this Indian delight at Babyccino in Paddock Wood, Ruh, bought a slice to our table, it is truly delicious and one of the many Indian inspired delights they serve . It takes a while to make but is certainly worth the wait, it is hard to find the pistachio cream in stores, but Amazon stock it (to be honest what don't they stock).

### Pistachio Kulfi sponge ingredients

400g plain flour  
200g white granulated sugar  
60g unsalted pistachios, blitzed  
1 tsp ground cardamom  
1 tbsp vanilla extract  
200ml flavourless oil, vegetable or sunflower  
400 ml milk  
16g baking powder  
1 tsp salt

### Milk mixtures ingredients

225g sweetened condensed milk  
225ml whole milk  
Pinch of saffron

### Whipped cream ingredients

400ml double cream  
40g icing sugar  
1tsp vanilla extract

### Topping ingredients

20g roasted pistachios finely chopped  
Dried rose petals  
Pistachio cream



### Method

Preheat oven to 140 degrees, grease and line a 25x35 baking tin.

Place blitzed pistachios, sugar and cardamon in a large mixing bowl, add the oil and vanilla and whisk until fully incorporated.

Add the sponge portion of the milk and continue to whisk.

In a separate bowl sieve the flour, baking powder and salt.

Mix into the wet mixture, fold together making sure the flour is fully incorporated.

Pour the batter into the prepared tin and bake for 50 mins, or until a skewer comes out clean.

Allow the cake to cool for 10 mins in the tin then remove to a wire rack to cool completely.

Whilst the cake is cooling prepare the milk by placing the condensed and whole milk in a saucepan, gently heat until the edges begin to bubble. Turn off add the saffron, allow to infuse whilst cooling.

Once cooled, transfer the cake back to the baking tin, poke entire cake with a skewer or toothpick and pour over the milk mixture.

Allow to sit for 30 mins at room temperature, then cover with cling film and chill for a least 2 hours or overnight. To make the whipped cream, place ingredients into a bowl and using an electric mixer, whisk until thickened, spread over cake.

Drizzle with the pistachio cream, then sprinkle with the chopped pistachios and rose petals. Serve and enjoy !



# Art & Craft Exhibition

By Muse Art Group

At The Chequers Inn, Laddingford, ME18 6BP

On Saturday 5th October.

10.30am to 4.30pm

Textile Art



Paintings



Lino Prints



Greetings Cards



Tea & Cake Available

**FREE ENTRY**

All Original, high quality Art

Glass Work

**KSSX**  
AIR AMBULANCE CHARITY  
KENT SURREY SUSSEX

**HELI HIKE**  
Kent

**Walk to keep your local air ambulance flying!**

Lace up your hiking boots, grab your friends and family. It's time for Heli Hike in Kent!

3 or 7.5 mile routes available

New for this year! Mini Medic Mile

10% discount Use code 'Kent10'

**Saturday 21 September**  
The Friars, Aylesford

Be a Heli Hike hero, sign up today!  
[aakss.org.uk/kent-hike](http://aakss.org.uk/kent-hike)

FR REGULATOR Registered Charity No. 1021367

Scan me

## SOMEWHERE DIFFERENT TO VISIT



**THE MAIDSTONE MUSEUM & BENTLIF** Art Gallery is home to a dazzling mummy, the only human one in Kent. Known as "Ta-Kush" and mummified as a young woman in Egypt, she is thought to be 2,700 years old.

The mummy is the jewel of the Museum's Egyptian collection, a nearly intact figure resting in the bottom half of a wooden inner coffin (the top half is in museum storage). She is swaddled in burlap, her remarkable hands, feet, torso, and serene face all visible through a glass case.

**OUR PRODUCTS, LOCALLY SOURCED, LOCALLY SOLD**

**AUGUST 2024**

**Horizon Scandal. Inquiry Continues...** Several other Post Office big hitters were interrogated at the Inquiry in the last month. The standard defence from these people appears to be "I was never told"... "It wasn't my job to ask"... "I must have misread that email"... "It wasn't me guv"... and "I'm awfully sorry that we got caught"... The Inquiry Chair has an awful lot of work to do in his report when the Inquiry ends in a month or so. It is a report many people will want to see... and a report that quite a lot of people will be dreading...

**Royal Mail's Tracked 24 or 48 Service, (Compensation up to £150.00)** Has finally been rolled out. Hopefully successfully. Meanwhile **Signed for** has reduced compensation from £50 to £20, which makes me think that this will be slowly phased out...

**King Charles banknotes.** King Charles banknotes of all denominations have been distributed. He does look rather young!!!

**Please be aware that the mobile phone network signal is not so good in the Post Office.** Many of our customers find their phones cannot download the necessary QR codes in the Post Office. So, if you are using a QR code from your phone to post off a return package it may be good practice to take an earlier screenshot of the QR code so our infra-red readers can interpret it quicker.

**Shop & Local Produce.** Cranbrook bakery items on sale every day. Orders taken. Sourdough bread available by special order. Cold drinks, unique greetings cards by local artists, Yalding and Laddingford honey, Joan's jams. Bit Spicy curry mixes, stationery, Yalding mugs, fresh eggs, (from genuinely free-range local chickens), Loddington Farm fruit juices & Oakapple Farm fresh produce – all in stock now. **Strawberries, cherries and raspberries in stock daily.** The Emporium is open every day and our stock is regularly restocked and refreshed by our ever-increasing army of local crafts persons.

New stamps sets this month are the **Tower of London** Collection Other Philately products in stock or can be ordered on request

**Foreign Currencies.** We maintain a stock of Euros and US Dollars... POL have informed us that credit on Travel Money Cards can be encashed at all branches in UK currency.

Your Post Office offers free cash withdrawals with most debit cards, pay bills, top up gas and electricity cards and keys, pay in cheques and cash to most banks using your debit card. We do phone Top-Ups and Moneygram. And, of course...we sell stamps and send parcels and letters all over the world. A list of nations that cannot accept mail at this time is on the Royal Mail website. **Mail to Russia, and Ukraine are currently subject to restrictions**

Our opening hours are 9.00am to 1.00pm. 2.00pm to 5.30pm. Closed on Sundays.

Early closing on Wednesdays and Saturdays (12.30pm Saturdays). Telephone...01622 814327.

# A VACANCY WILL EXIST

from the autumn

## FOR AN ALMSHOUSE IN YALDING

The Yalding Almshouses consists of a terrace of 6 homes set in quiet surroundings a short distance away from Yalding High Street and within walking distance of the local amenities and the bus stop for travelling further afield. If anyone knows of a lady living alone, over 55 years of age with limited means, living in, or with close connections to, the parishes of Yalding, Laddingford or Collier Street, who might like to be considered for this vacancy, please contact:

[sara\\_mahoney@outlook.com](mailto:sara_mahoney@outlook.com)

Applicants must have friends or family who can support living in the Parishes mentioned.

### **TIME TO APPLY FOR THE YALDING EDUCATIONAL FOUNDATION HIGHER EDUCATION SCHOLARSHIPS**

*The Yalding Educational Foundation has existed for many years (going back to the 1800's) and its purpose is to encourage the education of the children and young people of our local community.*

*Currently this objective is pursued in several ways. The YEF each year sponsors Spoken English competitions in the Primary Schools of Yalding, Laddingford and Collier Street. The YEF also provides funding annually for each school to provide the pupils with a 'cultural or educational' experience.*

*Finally, **scholarships** are provided to assist in the **Higher Education** of pupils of these local Primary Schools. These annual scholarships are available for up to three years of a University or College course. To qualify, students must have attended one of the local Primary Schools mentioned above for a minimum of two years and be aged over 18 years.*

*If you qualify please take the time to apply. Last year successful applicants were each awarded £200. The level of these annual awards does, however, depend on the number of applicants and the funds available.*

**Applications** in respect of the academic year 2024/2025 are now invited by **letter** only to:

Gary Atkins  
Clerk to the Foundation  
Hawthorns  
Laddingford  
Kent  
ME18 6BP

*Applicants should state which Primary School they attended and when, brief details of the University or College course they are following and their home and term time address. Applications must be **signed** by the applicant. If an email address is included, applicants will receive an acknowledgement on receipt of their application and a date by which the Trustees will be assessing applications so that awards can be paid. **All applications should be submitted by September 30<sup>th</sup> 2024.***

## LOCAL COUPLE COMPLETE THE PEKING TO PARIS RALLY

I had the brilliant idea that in our retirement we ought to do something together, something we could both enjoy. As a former Touring Car Racing Driver and total petrolhead that meant it had to involve cars for him. For me, well it was travel. To hook him into my brilliant idea I knew whatever we did it would have to be hard core competition, and nothing comes harder than the Peking to Paris Rally

To compete you need a historic car built before 1975. Luckily, he still had his 1965 Sunbeam Tiger that he had won the British Historic Rally in. Then you need a driver, great... the experienced Patrick Watts. And ..... a navigator. That would be me! How hard can map reading be? Weirdly, he nearly asphyxiated when I surprised him with the news that I had entered for the rally, been accepted and paid the deposit. In a sentence of few words, most unprintable, he explained that I was a totally unsuitable navigator and there was no chance we would ever get off the Beijing ring road.

Fast forward two years and Covid delay, a painstaking Sunbeam Tiger rebuild by him and endless planning by me, on May 9<sup>th</sup> we finally left for Beijing. Only to find it had not one but five ring roads!.

By which time I was literally frozen in fear. Horrifically, I realised I wouldn't be romantically following the latest Ordnance Survey Map across foreign fields but instead faced a bank of instruments I didn't understand and something called a Tulip route book. I had a GPS device with something called waypoints which would point us in the direction we needed to head across the Gobi Desert, a trip meter which would record distance to the meter, and should have reminded me this was a competitive rally about time and speed, a satellite phone for emergencies, which should have warned me of the toughness of this rally and a tracker in case we got lost and the organisers felt obliged to come and



I will never forget our first evening in Beijing meeting other competitors, all of whom seemed to be seasoned campaigners and the toughest of hard core rally sorts. There were 75 cars competing in two main categories. First, the Vintage blunderbusses built before 1947, then us in the more modern pre 1975 Classic Cars. This gathering of nutters consisted of 150 competitors from 27 different nationalities and only 14 females. In the bar the men intimidated each other with their past glories and tales of car control. Meanwhile in sisterly bonding Faith, one of the 14 Brits, and Frances from New Zealand took me under their wing with a crash course in navigating.



On May 18<sup>th</sup> the flag dropped on the 8<sup>th</sup> Peking to Paris Rally at the Great Wall of China amidst a spectacle of dragons and drums, courtesy of the Chinese authorities who were very welcoming

By now I'd got the hang of the Tulip route book, and to an extent the GPS. Fired with this new confidence off we set. At speed. Which meant there was no time for taking in the sights flashing past as my head was stuck in my route book. With passing kilometres my confidence increased and I amazed myself to find I had navigated us onto the major motorway to Datong, a new city close to the northern border with Mongolia, our first night stop. It was going brilliantly until we stopped at police check point where the nice policeman assured us that we were going east, not west. We had travelled 50kms on the wrong carriageway. Disaster. I dared not to speak as we made a U turn. The return 50km fell short of the land speed record but maybe only just. On a positive the Chinese were thrilled to the point of hanging out of their car windows videoing the old car passing them at speeds that their new Priuses could not compute. We finally arrived at the Hanging Temples, a time control for the rally and just narrowly made our time

Nothing but camels

Day 2 we were up with the lark and ready to go. Except the car didn't start. I found Patrick with his head stuck under the bonnet in a dark underground car park, furiously trying to figure out what had gone wrong. One by one the other cars departed on their start time and we were left behind. Hero, who organised the rally, come complete with sweep teams of engineers and spare parts. The best they could do that morning was to tow the car into the daylight and suggest we find a local garage. Hero also come complete with fixers, local people who know the area and speak the language. Said fixers worked the phones while Patrick worked the engine compartment to no avail. The solution came in the form of a break down truck which towed us to a small garage in Datong. My disaster management went into full throttle as I started to contemplate that our rally was over almost before it had started. After all the preparation and effort, I was now having to think about return flights and shipping agents for the car. I was devastated. Meanwhile at the pointy end Patrick was being slightly more practical and working on finding a solution with the local engineers. And he found it. The electronic ignition had failed. He needed a condenser. Great, except cars are a recent thing in China. Ten years ago, Beijing had 5 million bicycles (remember the song). Hence, they don't have parts for old cars. So, I'm back to booking flights home. Meanwhile Patrick contacted the sweep teams who were by then several hundred kilometres west of us and discovered they had condensers on board. Hurrah. We just had to catch up with them. Enter another tow truck. This time one that would take us to Hohhot some 300kms away. We arrived at the day 2 stop at midnight where Patrick and the Sweeps changed the condenser and mercifully the Tiger roared into life again



Instrument panel

By day 4 we were crossing sand dunes with humanity suddenly left behind, no more new cities, we were now camping. Apart from the odd camel there was just open, empty, vast nothingness. Meanwhile the tracks became seriously tough and corrugated rattling the car and shaking every nut and bolt until on day 9 the rattling caused metal fatigue around the rear shock absorber mountings and they shot through to the boot. The car was still driveable but to continue threatened the suspension. So, there in the middle of vast nothingness, on our own yet again, Patrick set about converting spanners into mountings to keep the shocks in place. The heat was unbearable and my job was to keep us both hydrated. I had a supply of salt replacement tablets but they dwindled fast as did our water supply. The spanner job worked enough to get us to camp. Once there he worked on the car through a sand storm late into the night. To add to the shock absorber problem, a weld on the oil sump had also been rattled to bits and we had a serious oil leak. Fortunately, the sweep teams also had welding equipment so by the morning we were up and running yet again



On a tow truck



Working on the car at night in camp

It took 13 days to drive the entire width of China from East to West. From there we crossed into Kazakhstan and then across the Caspian Sea by ferry to Azerbaijan, where the cars were parked in the Formula One pits while we were entertained royally by the Azerbaijanis. Crossing the border into Georgia took some 5 hours in searing heat but was nothing on the border between Turkey and Greece where we queued for most of the day under 36 degrees of beating sun

We drove through canyons, wadis, mountain passes, sweeping plains, threaded through herds of goats and camels along narrow tracks, were marauded by excited children everywhere we went and had countless photos with local policemen. We starred in awe at the pace of Chinese expansion and technology, took pictures of quaint Turkish villages were nothing has changed forever. Our little Tiger battled on with a distributor which continued to cause problems. Patrick never gave up and each day would find yet another solution, until 37 days later a police escort heralded our arrival into Paris. Missing the second day of the rally had made winning impossible or even coming in the top ten, but we had made it against the odds. We had completed the 8<sup>th</sup> Peking to Paris rally. Emotional doesn't quite describe it.



Weaving through the goats



Through the canyons

Pam and Patrick Watts

## ✿ Unlock Kent's Health and Well-Being Services! ✿

Discover a world of support in Kent! From social prescribing to urgent treatment centres, explore services tailored to enhance your well-being. Let's empower your health journey! ✿

### Social Prescribers:

Social prescribing connects people to activities, groups, and support that improve health and wellbeing. It can link you to support for things that matter to you, including financial support, housing information, advice, carers support, and social connections.

To explore available options in your local area, check out the National Academy for Social Prescribing map via the website [socialprescribingkentandmedway.uk](https://socialprescribingkentandmedway.uk)

### One You Kent:

One You Kent is here to help you get healthier and feel better. They offer support in various areas:

**Lifestyle Advisers:** If you need motivation or want to kick-start lifestyle changes, they can assist you.

**Weight Loss:** Ready to lose weight? They provide support.

**Physical Activity:** Want to get active? They've got you covered.

**Smokefree:** Take steps toward a smoke-free future.

**Walk and Talk:** Join short, local walks to stay active and meet new people.

**NHS Health Checks:** Get a free, simple check that could save your life – Bookable via your GP, please contact Yalding Surgery for more information.

**General Health and Wellbeing:** Discover more ways to stay physically and mentally well.

You can contact **One You Kent** at **0300 123 1220** or via email at [kentchft.oneyoukent@nhs.net](mailto:kentchft.oneyoukent@nhs.net). They're available Monday to Friday, 9 am to 5 pm. Additionally, check out their [Facebook](#) page for playlists, videos, and helpful information on your journey to a healthier you! ✿✿✿✿✿✿

### Crossroads for Carers:

Crossroads provides support for unpaid carers. Crossroads helps carers who care for family members or friends with illnesses, disabilities, frailty, or mental health issues.

Their goal is to keep loved ones and the caring unit together while giving carers peace of mind.

#### **Services Offered:**

**Quality Care Services:** Crossroads offers quality care services, allowing carers to take some time for themselves.

**Volunteering Opportunities:** If you want to volunteer with them, you can find more information on their website.

**Campaigning for Carers:** Crossroads continues to champion the needs of unpaid carers across Kent, advocating for no-strings-attached breaks that carers deserve.

Macmillan Volunteer Service: They collaborate with Macmillan to provide practical and emotional support to people living with cancer and their carers in Kent and Medway

Contact them for information and assistance.

#### **Crossroads Care Kent:**

Carers Hub (Main Office):

Address: West The Oast, 170 Tonbridge Road, Watlington, Kent, ME18 5NS.

Telephone: 03450 956 701.

Email: [enquiries@crossroadskent.org](mailto:enquiries@crossroadskent.org).

### Urgent Treatment Centres:

Urgent Treatment Centres (UTCs) in Kent provide prompt care for minor injuries and illnesses that are urgent but not life-threatening. Here's what they can help with:

**Assessment and Treatment:** They assess and treat minor injuries, such as cuts, sprains, and minor burns.

**Infections:** They can address infections, including wound infections and skin conditions.

**Minor Ailments:** For non-life-threatening ailments like sore throats, earaches, and minor allergic reactions, UTCs are a good option.

**X-rays:** Some UTCs offer X-ray facilities for fractures or suspected fractures.

**Clinical Priority:** Patients are seen based on clinical need, with priority given to more urgent cases.

You can download the Waitless app, which will give you details of your nearest Urgent Treatment Centre and their real time waiting times.

Remember, for life-threatening emergencies, always call 999. If you're unsure, consider calling NHS 111 for advice. Stay safe! 🌟🛡️

### **Cancer Care Map:**

Cancer Care Map is an online resource that helps people find cancer support services in their local area across the UK. Here's what it offers:

Medical Services: Navigate your treatment and find complementary support.

Emotional Support: Connect with someone to talk through the challenges of cancer.

Health and Wellbeing: Discover services to help you feel your best—both physically and mentally.

Practical Concerns: Get assistance with various aspects of life affected by cancer.

You can explore Cancer Care Map by visiting [www.cancercaremap.org](http://www.cancercaremap.org) and searching for services based on your postcode, city, or region. It's run by [The Richard Dimbleby Cancer Fund charity](#)<sup>1</sup>. Feel free to check it out and find the support you need!

### **Mental Health Support**

If you're looking for mental health support in Kent, here are some options:

Kent & Medway Safe Havens:

These havens offer free mental health support for anyone aged 18+ living in Kent and Medway.

They provide a welcoming, comfortable, non-judgmental, and non-clinical environment.

If you're in crisis, call 111 and select the mental health option. If it's urgent, dial 999 instead<sup>1</sup>.

Mental Health Support for Children and Young People:

NHS Kent and Medway Integrated Care System can provide urgent mental health care.

For self-harm or suicidal feelings, Emerge can arrange for a youth worker to visit you in A&E in Medway, Maidstone, or Darent Valley<sup>2</sup>.

Kent & Medway Children & Young People's Mental Health Service (CYPMHS):

Call NHS 111 (mental health option 2) if you're in crisis or need out-of-hours support.

Text "Kent" or "Medway" to 85258 for 24-hour mental health crisis support via text (provided by SHOUT)<sup>3</sup>.

Live Well Kent:

If you're 17+ and live in Kent or Medway, voluntary organizations and charities can help you:

Manage your mental health and wellbeing.

Gain confidence and meet new people.

[www.kmpt.nhs.uk/need-help/](http://www.kmpt.nhs.uk/need-help/)

Remember, you're not alone, and there are resources available to support you! 🌟

### **Involve Kent**

Involve Kent is a community-led charity and resource committed to providing holistic health and well-being support to people of all ages and circumstances in Kent and Medway. Here's how they can help:

**Health Hub:** Involve Kent offers a variety of services, including community transport, caring for someone, one-to-one support, family support, and young people's support. If you're unsure which service is right for you, you can call their friendly telephone advisors at **103000 810005** or email them at [hello@involvekent.org.uk](mailto:hello@involvekent.org.uk).

**Social Prescribing Service:** They provide regular one-to-one supportive sessions with patients referred by GPs. These sessions cover mental health support, housing support, transport, exercise classes, gardening groups, singing groups, and more<sup>3</sup>.

**Activities:** Involve Kent collaborates closely with the NHS and local councils to help people overcome challenges, stay independent, and lead happier, healthier lives. They offer activities such as social meetups, exercise classes, heritage trips, art, singing, and gardening groups, enabling people to make friends and have fun.

**Support for Carers:** They facilitate support and activity groups for individual carers, provide emotional support, and offer information on benefits and local services. Additionally, they have a Carers Forum where carers can directly engage with representatives from statutory agencies

Visit [www.involvekent.org.uk](http://www.involvekent.org.uk) for more information

---

## FRIENDS OF COLLIER STREET SCHOOL

---

# ANNUAL ROUND UP

As we wrap up the year, it's an opportunity to celebrate the amazing activities and events we've enjoyed together!

In November, we kicked off the festive season with a fabulous wreath-making event. A huge thanks to Sarah Catt for her expert guidance, resulting in some truly stunning designs.



December brought the ever-popular Christmas fair, filled with games and fantastic external stallholders. Thank you to Terry for his guest appearance!

In May, our annual quiz proved as competitive as ever. A huge thank you to Alexander for all his hard work in preparation and on the day.



The summer fair and pet show saw a great turnout, with fun games, stalls, and plentiful refreshments. A special highlight was Mr Ryan in the stocks - thanks for being such a great sport! Shout out to Hilton Hall Dance Academy and the Marden Fire Station for attending as well.



---

## FRIENDS OF COLLIER STREET SCHOOL

---

Our year concluded with the hotly anticipated Camp Out, where children danced at the disco, indulged in cake and lollies, and took part in a spirited adults vs. children rounders match. And then crashed out for a night under canvas.



Throughout the year, we also hosted many events for the children, including an Easter egg hunt (thanks to Charlene for the special guest), popcorn and film evenings, and a school disco!



While accounts are still to be prepared, this year looks to have been as profitable as the last, and we are grateful to everyone who contributed their time or money.

A huge thank you to all our volunteers; school governors; Alison for her cakes; and all local businesses who donated raffle prizes or held stalls. Your support makes these joyful events possible.



Finally, I hope you will indulge us in a special shoutout to our incredible FoCSS committee:

- Emma Howard and Gemma Elliott-Dunn, our Co-chairs, for their tireless efforts in serving all refreshments at every event.
- Hannah Sibley, our Treasurer, for her diligent work in managing the finances.
- Kelly Rigden, who has guided us as Chair for many years and is sadly stepping down at the end of this year. Your dedication has been invaluable.



## Woodpeckers— Summer Hedge Cutting

A small group attended in July, the main task being hedge cutting in the

Green Lane cemetery.



Stephane and Dave S wielded hedge cutters while Liz, Christine and Jo raked and bagged the cuttings.

David G cut the grass whilst Margaret, Michelle, Jacki and Ann pulled weeds and tidied around the graves.

Refreshments were served in the church just as rain started to fall. Annette made a delicious chocolate tray bake and Liz made tasty flapjack. Why not come along and join us on Saturday 3rd August, 10.00—12.00am.



**MINUTES**  
**PARISH COUNCIL MEETING OF**  
**COLLIER STREET PARISH COUNCIL**  
 Orchard Room, St Margaret’s School  
 on Monday 1<sup>ST</sup> JULY 2024 commencing at 19.00PM  
 In attendance

Cllr Andrew Papas [AP] Chair	Borough Councilor – Cllr Claudine Russell
Cllr Jack Highwood [JH] Vice-chair	Borough Councillor – Cllr Mick Summersgill
Cllr Ben Ward [BW]	
Cllr Charlie Cooper [CC]	
Cllr Deborah Papas [DP]	

**EXTERNAL REPORTS**

**BOROUGH COUNCILLORS**

It was noted again that due to the General Election there is no plan for cabinet going forward and they will not know until after the 11<sup>th</sup>/12<sup>th</sup> July. The only meetings taking place are the Planning meetings and the Overview and Scrutiny meetings for which Cllr Russell is the Chairman on this committee. All other meetings are on hold due to the General Election on 4<sup>th</sup> July, and will probably not start until after the Summer Break.

Comments for Parishes on Maidstone Borough Council activities in June 2024

**MBC Members Report from Cllr Claudine Russell Dated: July 2024**

**Local Plan**

The legal challenge from Heathlands has been refused a hearing by a judge. The next step for their campaign is to push for an oral hearing. At the public meeting the leader Cllr Stuart Jeffery mentioned that a re-write of the local plan could take up to 3 years to complete.

**Recent Important Planning Decisions**

A very recent planning decision has permitted a care home, over 55s living, an assisted living complex and a new location for the Heart of Kent Hospice to be located outside of the settlement boundary of Coxheath, outside of local plan allocations. Very disappointing that this was one of the first applications decided since the Local Plan adoption.

**Overview and Scrutiny Committee**

We have decided on the topics of Planning Enforcement and S106 and CIL to be scrutinised on the work programme. These were ideas that I put forward and I believe that they are really not delivering well enough for our communities, and I look forward to working on the topics to scrutinise them and hopefully recommend opportunities for improvement to the administration.

**Events**

The flock has arrived. Shaun the sheep is everywhere – the app can be downloaded and the free search begins to find all of the flock and see the beautiful designs. All in partnership with the Heart of Kent Hospice.

As always, if you need my help, please do not hesitate to email me at [claudinerussell@maidstone.gov.uk](mailto:claudinerussell@maidstone.gov.uk)

Report of June 2024, for Marden & Yalding Ward Parishes –

Actions during the month for Maidstone Borough Council have been limited by the late-May calling of the General Election, and Officers respecting ‘purdah’ on decision-making, but also three Councillors are standing in the Maidstone Constituency, including two Cabinet members. Quasi-legal Committees such as Planning and Licensing have continued, as has the Overview & Scrutiny committee (chaired by Cllr. Russell), but no Advisory committees (PACs) or formal Council meetings have been held. The Cabinet has been meeting informally and with Officers, to plan and agree the scope of its programme for 2024/25, which is expected to be presented at Council on 17<sup>th</sup> July.

As well as being appointed vice-chair of the Planning Committee, I was appointed to the Cabinet in mid-June (whilst on holiday!), as the Member with responsibility for Climate Transition & Nature Recovery. I am still coming to terms with my ‘key focus’ matters and ‘specific responsibilities’, but will be attending my first PAC on 8<sup>th</sup> July, presenting some proposals on Biodiversity, natural Flood Management, plus Solar Panels and Climate Adaptation of Council buildings for Councillor scrutiny and comment, before taking these to Council for approval later in the month. Two of my new Cabinet roles are as MBC’s representative on Upper Medway Drainage board (UMIDB) and on Kent Flood Risk Committee, at which I will be able to utilise my career experience in water engineering.

In wider 'community' terms, MBC announced on 1<sup>st</sup> July that there is now a new 'flock' of Shaun the Sheep and his friends in town, which children (and adults!) can follow on a walking trail – details on [www.sh Shaunheartofkent.co.uk](http://www.sh Shaunheartofkent.co.uk). And there will be a Summer Series of performances in Jubilee Square on Saturdays from 10am-2pm for six weeks, and also concerts in Brenchley Gardens on Sundays 3-5pm... all free to view, details on the Council website. These were initiated by Cllr. Russell earlier. I personally attended further on-line Training on Biodiversity Net Gain (MBC), Retro-fit for Buildings (KCC) and Parish responses to Climate Change (national, NALC), and chaired the (south Maidstone rural) Parishes Environment Group in Sutton Valence on 26th June, with 9 Parish Councillors present.

**Parish Matters – Yalding** Enterprise Park: Cllrs. Summersgill & Couch attended a meeting with MBC Planners and the Developer's representatives on 25<sup>th</sup> June, to look at the next Phase of the YEP scheme, pending a further submission for Planning. They will also be visiting the Site on 9th July.

**Hunton Bins** – A special Parish/Residents' meeting was held in June, at which the MBC Director responsible for the SUEZ contract explained the problems and what was being done to correct them. Cllr. Russell attended this, and the village 'bin day' has now been switched to Mondays from 1<sup>st</sup> July.

**Marden SpeedWatch** – I have been nominated as Co-Ordinator for this (I'm already that in Hunton), pending finding a further volunteer to fulfil this role. We all need to have training (or re-training) in the Parish's equipment usage, but it will start in Marden soon to add to other local SpeedWatch.

## **PUBLIC FORUM**

### **MEMBERS OF THE PUBLIC QUESTIONS**

Meeting was adjourned at 19:22hrs to hear from one member of the public.

Simon MacKay stated he has sent details to the Clerk regarding a planning application. [AP] pointed out that this has not been circulated due to only being sent on that day, and that we could not discuss a planning application in this part of the meeting.

Mr McKay wanted to give an update on the progress of The White Hart site.

The works have started and are progressing and the anticipated completion time is 36 to 39 weeks, from the first week of June, when works started. Birkby are the developers. There is a planned letter drop to the nearby neighbours in the first week of July, to update them on the progress. There will be a hording put up with contact details for anyone that has queries or questions. The developers are aware of the recent parking issue with works vehicles and are planning to sort this out by opening up the Coach House site, so contractors can park there, instead of the junction or verges. There are two outstanding planning conditions which are being addressed; one is to do with the sub scheme and the other is to do with lighting. The discharge from the drainage board has been received for the drainage systems being put in place.

The development is being called White Hart Villas and there will be an update on where the motif for the site, is to be placed. This was initially going to be on the end elevation, which has proved difficult, so they will be obtaining some CGI drawings are being produced to show where this could be placed and suggestion at front of the properties onto Spenny Lane will be shown on these drawings. There will be a wooden picket fence so the signage will look tasteful. However, they are open to ideas.

The properties will go to market soon online to sell the area as well as the houses.

[JH] queried about the security fencing being in the road initially, and had raised this previously and was told it would be moved, but never was. [JH] went on to mention that the pavement directly outside the site has now been being dug up, and asked if the developer is claiming the pavement is private property. Mr MacKay confirmed that after discussions with Highways, it was confirmed that the pavement was within the title of the White Hart site. He went on to say that he would also take back comments about the safety fencing. [JH] reiterated that when he looked at the plot map for the development, it did not include the pavement, but when the site was stripped out a couple of weeks ago, the pavement was dug up and stripped out at the same time. Mr McKay stated they were happy that the pavement area is part of the site. [JH] stated the concern for safety of pedestrians walking around the corner if cars were to mount the kerb as there would be no room between the highway and the site. [AP] asked if the pavement was going to be reinstated. [JH] stated that it is being removed and is part of the development. Mr McKay confirmed this was the case. [AP] asked again if there were any plans to reinstate down the line, if not immediately. Mr McKay said there would have to be some footpath there but would take back the safety comment whilst the development was being carried out. [JH] pointed out that any incident could result in a costly claim against the developers.

**Prepared by | Cllr Deborah Papas | Collier Street Parish Council**

<b>USEFUL CONTACT DETAILS</b>			
<b>CHURCH</b>		<b>DOCTORS</b>	
Reverend Paul Kish	01622814182	Burgess Bank Surgery	01622 814380
	<a href="mailto:Vicar@YaldingChurches.co.uk">Vicar@YaldingChurches.co.uk</a>	Marden Medical Centre	01622 831257
Church Warden tbc		<b>PADDOCK WOOD COMMUNITY ADVICE</b>	
Sec to PCC Evie Cummins	<a href="mailto:M.slater@outlook.co.uk">M.slater@outlook.co.uk</a>		01892 838619 info@pwadvice.org
<b>PARISH MAGAZINE</b>		<b>VILLAGE HALLS</b>	
Editors Jacki Fogg	01892 730869	Yalding Village Hall	01622 814163
Emma Howard	<a href="mailto:editorparishmag@mail.com">editorparishmag@mail.com</a>	Youth & Community Centre	01622 815498
Advertising Tracey Bentley	01892 730252	<b>COLLIER STREET PARISH COUNCIL</b>	
		Clerk to the Council Michelle Rumble	07938 511974
<b>VILLAGE HALL</b>		<a href="mailto:parishclerk@collierstreetparishcouncil.co.uk">parishclerk@collierstreetparishcouncil.co.uk</a>	
Ben Ward Chairman	07976 277189	<p style="text-align: center;"><b>Chair – Andrew Papas</b> <b>Vice Chair – Jack Highwood</b></p> <p style="text-align: center;"><b>Councillor – Ben Ward</b> <b>Councillor – Charlie Cooper</b> <b>Councillor – Deborah Papas</b> <b>Councillor – Kelly Rigden</b> <b>Councillor – Steve Barham</b></p> <p style="text-align: center;"><b>All correspondence to be sent to the Parish Clerk:</b></p> <p>Michelle Rumble – <a href="mailto:parishclerk@collierstreetparishcouncil.co.uk">parishclerk@collierstreetparishcouncil.co.uk</a></p> <p style="text-align: center;">07938 511974</p>	
<b>HELPING HANDS</b>			
Margaret Ashworth (Age Concern Representative)	01892 730323		
<b>SCHOOL</b>			
Headteacher Paul Ryan	01892 730264		
Chairman of Governors Sean Randall	01892 354736/07891 927684		
Friends of Collier Street School			
Chairman Kelly Rigden	<a href="mailto:info@focss.org.uk">info@focss.org.uk</a>		
<b>YALDING'S WOMENS' INSTITUTE</b>			
Chairperson Deann Stead	07920 402052		
<b>SCOUTS</b> (Beavers 6-8),0 (Cubs 8-10.5) Scouts (10.4-14) Sandra Grace	01622 200555		

## *Farleigh Cakes and Bakes*



Bespoke cakes especially for you

Celebration cakes and bakes created for any occasion, designed in consultation with you.

All dietary requirements catered for.

Please call Julie on 07739312127  
or email [farleighcakesandbakes@outlook.com](mailto:farleighcakesandbakes@outlook.com)

## **Ken Ballard Ltd**

**FAMILY BUTCHER**

English meat killed on the premises

We can supply top quality meat for  
your freezer.

**WEST END MARDEN**

**01622 831285**

### Local Plumbing Services

**Boiler servicing & maintenance**

**Boiler breakdown**

**Central heating**

**System maintenance & repair**

**Oil tanks & maintenance**

**01622 744454/07759861720**

**John.twydell2@btinternet.com**

**Headcorn Plumbing Services**



## **J L BUTTIGIEG TREE SERVICES**

### **Arboriculture & Landscape Contractors**

**Tree Surgery**

**Hedge Cutting**

**Landscaping**

**Grass Cutting**

**Fencing**

**And more**

**Yalding Based**

**Fully Qualified & Insured**

**Free No Obligation Quotes**

**Year Round Call out**

**Call Josh on 07718 592354**

**[jlbtreeservices@gmail.com](mailto:jlbtreeservices@gmail.com)**

**YOUR LOCAL CLOCK  
AND WATCH  
REPAIRERS**

# TWO BREWERS CLOCKS AND ANTIQUES

**Lees Road, Yalding,  
ME18 6HB**



01622 817 315  
07767 777 101  
clocks1066@hotmail.co.uk  
www.clockrepairs.net



## LOGS FOR SALE

Save on heating your home

£95.00

Larger trailer load

Stephane Mackay

01892 730318

## PIANO LESSONS

Children & Adults  
Beginners - Grade 8

Marjorie Ayling  
BA Hons, Hon FTCL, ARCM

Phone: 01892 835702

Email: [marjorieayling@outlook.com](mailto:marjorieayling@outlook.com)

**DM PAINTING & DECORATING**

**OVER 45 YEARS' EXPERIENCE**

**FREE ESTIMATES**

**INTERIOR & EXTERIOR WORK**

**PAPER HANGING**

**PHONE COLIN: 07535060157**

**OR DAVE: 07928522352**

**EMAIL: [drmoody@btinternet.com](mailto:drmoody@btinternet.com)**



local gardener  
maintenance  
soft landscaping  
design

damien murphy  
07396 717 163  
[thegardenerofkent.co.uk](http://thegardenerofkent.co.uk)

A new, very local and personalised service for all your computer problems!

**Do I need a new machine? It's running slow—Why?  
Have I got a Virus? I'm a beginner, I need some training, I  
want to print my own address labels**

I can sort out most PC problems, quickly, at minimal cost and with complete confidentiality. I can help you with most Hardware or software issues and set up your system to suit you. What's the Cost? I make no personal gain at all on the deal, We agree between us a reasonable amount which you then pay to Yalding Church Council. If you pay Income Tax, please pay this as gift Aid.

**Contact: Graham Spillman 01622 813771 or  
spillmg@gmail.com**

# ALL LOADS Ltd

**SPECIALIST IN SUPPLYING:  
Topsoil, Sand, Ballast, Grab Hire  
TO TRADE & THE GENERAL PUBLIC**



**01622 873231 FREE LOCAL DELIVERY**  
**www.allloads.co.uk**

## TOP2BOTTOM LTD



### **ROOFING SPECIALISTS & BUILDING CONTRACTORS**

Friendly roofing and building company based locally in Benover

**SPECIALISTS IN PERIOD &  
LISTED PROPERTIES**

Established over 25 years and fully insured

Roofing— tiled, pitched, flat, leadwork, chimneys, PVC fascia/soffit/guttering

Building—Extensions, alterations, new build, Renovation works, conservatories, windows & doors

Paving and decking—patios, drives, landscaping,

Drainage and groundworks

Maintenance and improvements, General Repairs

Domestic and Commercial

Free estimates and advice

Call Mark on 01892/730299/07850 911322

info@top2bottom.co.uk

www.top2bottom.co.uk

Burnt Oak, Benover Road, Benover ME18 6AS

## Red Bus Communications

*Specialising in:*

- Telephone Point Relocations
- Home and Office Data Network Cabling
- TV Aerial and Satellite Installation
- Commercial and Home CCTV Systems
- AV Solutions for Home Cinema Design
- Fitted Bluetooth Speaker Networks

Get in touch today  
for a FREE Quote

☎ 07590 289851

☎ 01892 730281

✉ redbuscoms@outlook.com







# Camrass Wills

» KENT & SUSSEX «

Advice you can trust



Camrass Wills is a small family business based in Yalding and was started by Peter Camrass in 2010. It is now run by Peter and his daughter Lucy. Peter is based in the Maidstone area and Lucy in Brighton. Peter has over 30 years' experience in the financial services industry and 12 years as a professional will writer and estate planner. Peter is a member of the Society of Will Writers which is the largest self-regulatory body within the will writing profession. In addition to being a will writer, Lucy is a graduate accountant. We specialise in providing advice for wills, inheritance tax, lasting powers of attorney and probate.

**Wills | Powers of attorney | Probate**

» Help & advice «

» Home visits «

» All fees agreed before you proceed «

**For a free initial consultation contact Peter Camrass on: 01622 720985**

[www.camrasswills.co.uk](http://www.camrasswills.co.uk)

## DOMESTIC & COMMERCIAL

### **B.T. ENVIRONMENTAL PEST PREVENTION & CONTROL**

Wasp's nests

£30 plus VAT

You won't get stung by us!



BRITISH PEST CONTROL  
ASSOCIATION QUALIFIED

01622 200333/07875 579692

Best prices in Kent. 7 days a week

[www.bt-environmental.co.uk](http://www.bt-environmental.co.uk)

[barry@bt-environmental.co.uk](mailto:barry@bt-environmental.co.uk)



# **The Woolpack Inn**

## **Opening Hours**

**Tuesday—Saturday 11-3 & 5—10.30**

**Sunday 12—8**

**Food Served**

**Tuesday—Saturday 12-2 & 6—9 & Sunday 12—5.30**

**CLOSED MONDAYS**



**[woolpackyalding.co.uk](http://woolpackyalding.co.uk)**

**01892 730356**

## **CML CUXTON METAL LTD**

**WE SELL: Aluminium, Brass, Bronze, Copper, Mild Steel,  
Stainless Steel, Engineering Steels, RSJ's, Building Steels**

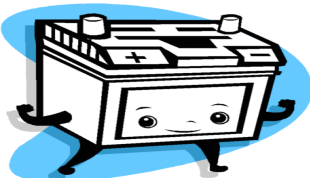
**SPECIALISTS in SMALL order quantities and LARGE jobs**

**01892 730922 email:msgodden@hotmail.com**

**We can service your every metal requirement**

**Call today for friendly, fast, reliable service**

**Phone 01892 730922**



**BRADFORDS BATTERIES**

**AUTOMOTIVE BATTERY SUPPLIER**

**1 Church Farm Collier Street**

**01892 730922 24/7 call out**





Flowerbeds

Hedges

Fencing

Trees

Maintenance projects



Scan for more

07792672555

homeimprovementswithcal@gmail.com

For all your gardening needs!

# impact decoration

Painting & Decorating  
Interior & Exterior  
City & Guilds Qualified  
Dulux Select Approved Decorator  
Fully Insured  
Domestic & Commercial Clients  
Virtually Dust Free Sanding  
Wallpaper Hanging

Sam Gregory

mob - 07882 597433

home - 01732 873726

web - [www.impact-decoration.co.uk](http://www.impact-decoration.co.uk)

email - [info@impact-decoration.co.uk](mailto:info@impact-decoration.co.uk)

## The Old Forge



## Cattery

*"Simply the Best"*

Luxury boarding cattery situated in the quaint rural village of Laddingford.

We are a small, family run cattery with a relaxed, friendly and informal atmosphere where the care and welfare of our feline guests is of prime importance.

**Contact Sandy King on 01622 871330**

Email: [cats@theoldforgecattery.co.uk](mailto:cats@theoldforgecattery.co.uk)

Website: [www.theoldforgecattery.co.uk](http://www.theoldforgecattery.co.uk)

# Barrett Roofing



Brandenburg Oast, Collier Street  
Tonbridge, Kent TN12 9RH

All types of roofing work undertaken, including:

**Flat Roofing**    **Tiling**  
**Lead Work**     **Slating**  
**Gutters**        **Fascias**



**Tel:** 01892 730581 • **Mob:** 07850 785381  
**Email:** office@barrettroofing.co.uk



CALL TODAY:

**01622 814343**

To book your **FREE** lift  
to get to your **Covid**  
**Vaccination Appointment**

Cabs for Jobs is for older and vulnerable Yalding residents who need help getting to and from their covid vaccination appointment

Donate Here: [gofund.me/b5f1e5ab](https://gofund.me/b5f1e5ab)

## COXHEATH VETERINARY SURGERY

6 WESTERHILL ROAD, COXHEATH  
PROFESSIONAL PET HEALTHCARE IN A BRIGHT  
FRIENDLY  
AND CARING ATMOSPHERE. WE HAVE MOD-  
ERN

DIAGNOSTICS & OPERATING FACILITIES

MON-FRI 8.00—19.00

SAT 8.00—12.00

TEL. 01622 743888

PATRICK TIBBITTS BVSC (Massey) MRCVS

CAROLINE McILWAINE BVSC (PRETORIA)

MRCVS



# EDEN



AWARD WINNING SALON

*"Eden is a place of complete bliss and delight"*

- Exceptional high standards of Hairdressing and Barbering
- Discounts for Students and Over 60's
- Established 25 years

## Eden Salon

- Appointments also available on Evenings and Weekends
- Gift Vouchers Available

At Eden we provide a Warm and Welcoming service whether you are treating yourself or a friend we promise you will not be disappointed.

### FOR A FREE CONSULTATION

Marden 01622 833088  
[www.littleedenltd.co.uk](http://www.littleedenltd.co.uk)



# LR XS

01892 732056



[www.lr-xs.co.uk](http://www.lr-xs.co.uk)

## Land Rover Servicing, Refurbishment & Sales Specialists

- Annual Servicing
- Diagnostics
- MOT Preparation
- Bodywork Repairs
- Engine Tuning
- Parts & Accessories
- Upgrades & Enhancements

Unit 3 - Church Farm  
Collier Street  
Tonbridge  
TN12 9RT



**DUDE &  
ARNETTE**  
OAST COWL CONSTRUCTION

Dude and Arnette are a **fourth family generation** family business. Our team specialises in restoring and repairing Oast Cowls - the distinctive chimneys on the top of Oast Houses.



We are the UK's leading restorer and repairer of traditional Kent hop kilns. From Royalty to businesses to homeowners, we have been the **go-to Oast House** repair company for over seven decades.

#### Our Services Include

- ▲ Oast Cowl Construction
- ▲ Oast Cowl Cleaning
- ▲ Oast Cowl Painting
- ▲ Kiln Roof Maintenance

We also specialise in the restoration and re-selling of Kent Peg Tiles

Why not contact us today for a discussion about your oast cowl  
01622 725898 / 07973 332790 or [info@dudeandarnette.co.uk](mailto:info@dudeandarnette.co.uk)

**[www.dudeandarnette.co.uk](http://www.dudeandarnette.co.uk)**

# YALDING TAXIS

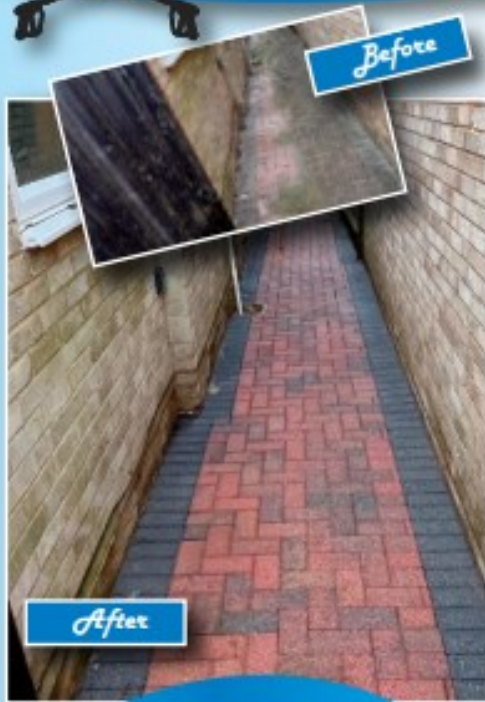
- Competitive - Personal - Professional - Reliable
- Friendly, local, experienced family-run business since 2006
- Excellent local knowledge & throughout Kent
- No journey too short or too far
- Whole of Kent covered for long distance runs (airports, seaports, stadiums, London etc.)
- 24/7 service, 365 days a year (when booked in advance)
- Competitive rates
- No extra charge after midnight (when booked in advance)
- All major credit & debit cards accepted
- Vehicles with up to 8 passenger seats
- Modern, clean, comfortable fleet - fully licensed and insured
- All drivers DBS checked and fully licensed (badged) by local taxi licensing authority



078 777 777 44



# Benny and the Jets



Transforming the look of your home or business with spotless exterior cleaning.

## Cleaning services we offer:

- Roofs ● Patios
- Driveways ● Cladding
- Gutter inspection/vacuuming
- Window cleaning
- Softwashing
- Commercial fleet
- Industrial/Agricultural

Contact us today for your FREE no obligation quote!



Call or WhatsApp: 07425 895919